

**Ysgol Uwchradd  
Prestatyn  
High School**

*"Llwyddiant i bawb drwy positifrwydd a chyfrifoldeb"*  
*"Achievement for all through positivity and responsibility"*



## Prospectws yr Ysgol School Prospectus

---

# 2023-24

---

---

## Croeso I Ysgol Uwchradd Prestatyn

### Welcome to Prestatyn High School

---



Prestatyn High School is improving rapidly in all areas and I am honoured to be the Headteacher of such a vibrant and successful school. Joining Prestatyn High will guarantee an excellent education, very high standards and outcomes that will allow your son or daughter to move onto the next stage of their academic life with the right skills, qualifications and attitudes. We are determined to improve the life chances for all the young people in the Prestatyn area and beyond.

We are exceptionally proud of all pupils and staff and these amazing results reinforce our belief that what we are doing day to day is the right thing to do and that the high standards we hold are having an impact.

Alongside this we are continuing to renovate and improve many areas of the school building to give all of our learners the best educational experience possible. These changes and improvements are just another step in our journey towards excellence. We are improving every aspect of the school, putting the pieces into place to make our school a beacon of learning and excellence. These improvements and the outstanding school uniform have allowed us to continue to transform Prestatyn High and its community, further raising our aspirations and expectations of what is possible. The future is very bright for all learners at our great school.

We were visited by Estyn earlier this year and the feedback we received was fantastic. We were delighted with the outcome and this further encourages us on in our mission to improve the life chances of each and every learner that attends Prestatyn High School. I

encourage all prospective parents and carers to have a read of the inspection report to see how well Estyn think we are doing with all of our learners. The staff here at Prestatyn High work tirelessly to ensure our pupils and students enjoy their time at school, work hard and achieve good outcomes. In an ever changing education landscape, our focus is fixed firmly on strategies to further improve the quality of teaching, learning, assessment, personal development, behaviour and welfare for all our young people. This first class education will provide them with the knowledge to achieve well in examinations whilst developing lifelong skills that will prepare them for their future.

Here at Prestatyn High we embed Literacy, Numeracy and IT skills in all we do, ensuring that all pupils are ready to make their way in the world and society. We strive that all pupils, no matter their starting point or background, make rapid and sustained progress. The opportunities available to learners at Prestatyn High are as numerous as they are varied. The broad curriculum empowers learners to progress well and achieve the very best academic qualifications.

Further information is available on our website  
[www.prestatynhigh.co.uk](http://www.prestatynhigh.co.uk)

If you would like to visit the school please phone to make an appointment.

Headteacher  
**Mr N Foley** B.Sc. MA.

---

## Derbyniadau

### Admissions

---

Admissions to the school depend on the official admission numbers calculated by the local education authority. Applications received by the published date (04/11/22) up to the official number are usually successful regardless of where the applicant lives or goes to school. Over subscription criteria will apply if the admission number is exceeded. This year (2022-23) we admitted 248 to Year 7 which is below the official number of 286. The admission number for 2023-24 is 286. If relevant, oversubscription criteria apply in the following rank order:

1. Pupils for whom there are exceptional social reasons (e.g. looked after children), which in the opinion of the Corporate Director for Lifelong Learning, justify admission to the school.
2. Pupils for whom there are exceptional medical or educational reasons, which in the opinion of the Corporate Director of Lifelong Learning justify admission to the school.
3. Pupils who are residents within the intended geographical area (or designated catchment area, where defined) that the school is intended to serve.
4. Pupils for whom it is the nearest school suitable for their age, parental language preference (designated Welsh Medium Schools) or parental denominational preference (controlled schools) as measured by walking distance from the nearest available school gate to the pupil's home.
5. Siblings of pupils already admitted under point 2, 3, 4.
6. Pupils living nearest to the school, measured by the shortest walking distance from the nearest available school gate to the pupil's home.



An appeal procedure operates as explained in the information guide. Applications for admission into other year groups are referred to Denbighshire County Council. All queries should be directed to County Hall Ruthin **01824 706101**. Prospective parents/carers may wish to view the school, in which case they should contact the school office to make an appropriate appointment

#### Apply for school online

*Denbighshire is offering the chance to apply for places in secondary school for September 2023 online at [www.denbighshire.gov.uk](http://www.denbighshire.gov.uk)*

**Deadline for application admissions  
3rd November 2023**





***“an inclusive learning community where pupils and staff work closely and effectively as a team and these relationships form the heartbeat of the school. The school provides strong and well-considered support for pupils’ well-being”***

---

## Pontio Transition

---

Prestatyn High School has a close working relationship with each of our feeder primary schools. We work collaboratively with them to make the transition process as smooth and enjoyable as possible. We visit each school regularly throughout the year to gather information about individual pupils in order to plan effectively for their arrival. We also put on extended transition activities for all schools to make the move up to secondary school as successful as possible.

***“We welcome all students from inside or outside the Prestatyn area and place them carefully to ensure that their learning is fully supported.”***

Mr D North - Head of Year 7 / Transition Coordinator



## Our Feeder Primary Schools

Bodnant Community School  
Ysgol Clawdd Offa  
Ysgol Hiraddug  
Ysgol Penmorfa  
Ysgol Trelogan

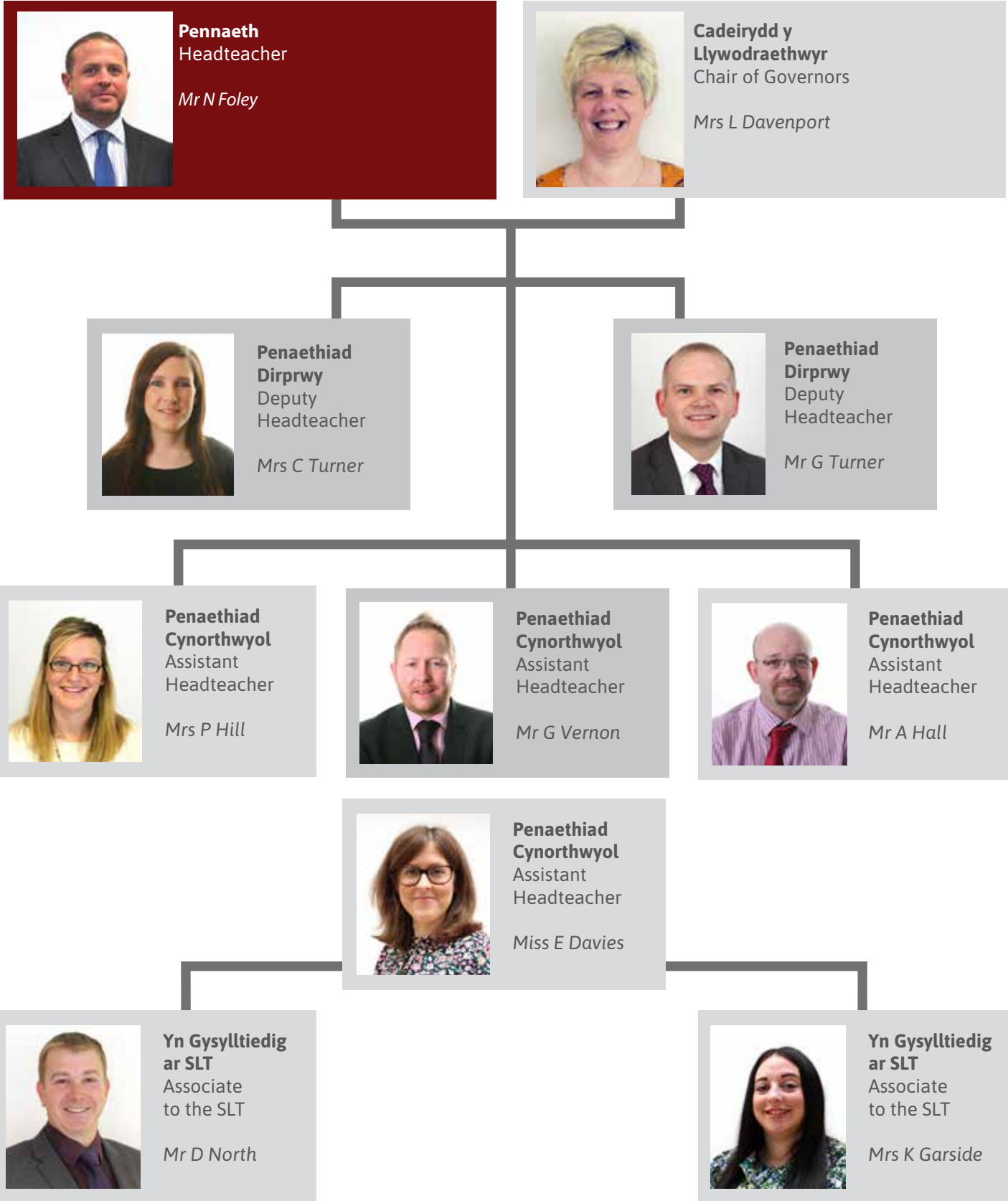
Ysgol Bryn Garth C P School  
Ysgol Gronant  
Ysgol Melyd  
Ysgol Trelawnyd

**The highest  
expectations  
and standards.**

**Rapid and  
sustained  
progress for all.**

Tim Rheoli

Senior Leadership Team



---

## Pennaeth blwyddyn

### Heads of Year

---

All pupils are allocated a place in one of our form groups, named after the planets, on their arrival to Year 7. In Year 7, pastoral care is led by Head of Year Mr D North. Form groups are designed around friendship groups to support our new pupils and to allow them to settle into their new school with the minimum of disruption.

The Head of Year, their Deputy and Assistant Head of Year are responsible for the daily care of each pupil. The Assistant works closely with the Head of Year to provide counselling, guidance and discipline. Please contact the pastoral teams if you have any concerns throughout the year.

#### Year 7



**Head of Year**  
*Mr D North*



**Assistant**  
*Mrs J Jones*

#### Year 8



**Head of Year**  
*Mrs K Larkin*



**Assistant**  
*Mr J Allcock*

#### Year 9



**Head of Year**  
*Mrs P Pritchard*



**Assistant**  
*Miss M Davies*

#### Year 10



**Head of Year**  
*Mrs T Williams*



**Assistant**  
*Miss O Ward*

#### Year 11



**Head of Year**  
*Mrs J Stevens*



**Assistant**  
*Mr J O'Neill*



---

## Y Cwricwlwm Cymreig a Dwyieithrwydd

### Y Cwricwlwm Cymreig & Bilingualism

---



#### Do you want to be part of the Welsh enrichment form group?

Students who have a keen interest in speaking the Welsh language have the opportunity to be in a Welsh enrichment form class. The class would have a Welsh registration teacher and be expected to use Welsh speaking and listening skills during this time. The long term proposal is to improve GCSE Welsh grades and to nurture the use of Welsh. We also offer the opportunity to be part of the Urdd activity group.

For more details, contact:-

**Ms L Macgillivray**



Whilst Prestatyn High School is an English medium school, the Welsh culture and language is evident throughout the school. Pupils are encouraged to use incidental Welsh in all their lessons e.g. when answering the register; asking for equipment; in assemblies; and whenever the opportunity arises.



**Ms L Macgillivray**  
Bilingualism Coordinator

#### Bilingualism

Ms L Macgillivray is our Bilingualism Coordinator, visits schools as part of the transition process to support Welsh learners. We are always exploring new ideas to encourage this national priority such as the Welsh - enrichment form classes and transition projects.

---

## Gofal, cymorth ac arweiniad Care, Support & Guidance

---

Prestatyn High is a very caring school that provides an environment and ethos that enables all students to achieve. We are a fully inclusive comprehensive school with a well defined support strategy and pastoral system which is designed to meet the needs of all our students.



### Student Support Team

The Assistant Heads of Year support the emotional, social and behavioural needs of the students in their year group. They, along with the Heads of Year identify problems, target interventions, and support students of all ages.

### Buddies

In Year 10 students get the opportunity to become ambassadors for Prestatyn High School by applying to join our peer support team - 'The Buddies'. Buddies go through a full day of training which is based on the Childline CHIPS package and supervised by the Student Support Team and transition teachers.

Buddies are on duty throughout the whole school year to provide support and guidance to Year 7 and other new students who arrive at Prestatyn High School. They are on hand to explain how the school works and answer any questions or worries the new students may have. Buddies are expected to work as a team and liaise with Student Support Team to maintain a good level of communication. Our Buddies' motto is to **'Have fun, help out and learn as much as we can'**.

### S.P.Y. (Sixth Formers Protecting You)

This peer network has been supporting pupils since 2000. Committed Sixth Form students undergo training that will equip them with the skills to deal with a range of emotional and social issues experienced by our younger students.

### Additional Learning Needs

The ALN Department is committed to supporting all students with Additional Learning Needs. Some pupils participate in a programme to support the move to the next phase of their education. We regularly liaise with parents of developing positive home / school links in working together to ensure that all pupils reach their full potential.

---

## Gofal, cymorth ac arweiniad

### Pupil Welfare & Safety

---

#### Anti-discrimination

Discrimination is the unjust treatment of different categories of people. This could be because of race, religion, age, sex, disability, gender identity, sexual orientation or other perceived differences. Discriminating and targeting someone because they are different to you is wrong, regardless of the methods used to discriminate. At Prestatyn High School we take discrimination VERY SERIOUSLY AND IT WILL NOT BE TOLERATED. We will deal with all instances of discrimination in a stringent and robust way. We all have a duty to call out discrimination and racist abuse and put a stop to it. We have strong policies and procedures in place to deal with this.

However, this alone is not enough. We are a school of inclusivity and diversity. We want to ensure representations from all groups are heard. We have set up an anti-discrimination group with students from all years to work very closely with their peers, staff members and the wider community. They have launched a very successful campaign Discrimination, It Stops With Me. We are also offering weekly drop-in sessions for students and parents to voice any concerns or to discuss any further ideas they may have. We will continue to work hard to celebrate diversity and make our school inclusive.

#### Anti-Bullying Policy

As a school we take the issue of bullying very seriously. Whatever the cause, bullying will never be tolerated at Prestatyn High School and we will do all we can to address issues that we are made aware of, even though no school can claim to be completely free of bullying. All incidents are treated seriously and parents are invited to contact the school if they have any concerns. A copy of the school's anti-bullying policy is available on request.

#### Datganiad wrth-ormesu Statement on bullying

Our definition of bullying states:

Bullying is something is deliberately hurtful which is repeated over a period of time. This can be physical or emotional. bullying makes it difficult for the victims to defend themselves.

pupils are invited to join an extended transition on their child's progress and recognise the importance potential.





## Parent Teacher Association

The school would like to relaunch the PTA this year and we are asking parents to put themselves forward to join this great association.

### Meetings

Meetings will be held half termly in school and all parents are invited to attend the meetings which are informal and friendly.

### Social and Fundraising

PTA committee members will arrange social and fundraising events and are always on the lookout for new members and ideas. Any proceeds are distributed annually to support projects and activities to enrich school life for the pupils.

### Join

If you are interested in either joining the committee or helping with particular events, please contact the Head's PA **Mrs L Thomas** (c/o Prestatyn High School).

Such involvement is certainly a most useful way of supporting the school and your child.



### School Council

The School Council, plays an active and successful role in improving the school environment and in reviewing school policies. House Councils also support the work carried out by the School Council. Pupils are also involved in making decisions through the Sports Ambassadors, Fair Trade and Eco School committees. Associate Pupil Governors provide a valuable link between pupils and the governing body.



---

## Addysg Grefyddol, Addysg Iechyd a Pholisi Addysg Rhywiol

### Religious, Health & Sex Education Policy

---

#### RSE - What is RSE?

RSE is a positive and protective part of the Curriculum for Wales. It plays a central role in supporting learners' rights to enjoy fulfilling, healthy and safe relationships throughout their lives. RSE will be delivered within Prestatyn High's pastoral sessions and Social Responsibility lessons. Central to the Curriculum for Wales is an aspiration for every child and young person to achieve the four purposes of the curriculum. A rights and equity based RSE curriculum helps ensure that all learners can develop an understanding of how people's faith, beliefs, human rights and cultures are related to all aspects of RSE and how these rights can contribute to the freedom, dignity, well-being and safety of all people. Therefore, schools and settings should discuss RSE in the context of the Rights protected by the United Nations Convention on the Rights of the Child. RSE should support learners to develop the knowledge, skills and values to understand how relationships and sexuality shape their own lives and the lives of others. Learners should be equipped and empowered to seek support on issues relating to RSE and to advocate for self and others. RSE will be a mandatory requirement in the Curriculum for Wales for all learners from age 3 to 16 ("the Act"). This means that all learners must receive this education. There is no right to withdraw from RSE in the new curriculum.

If you have any queries or concerns. Please feel free to contact Miss Kirsty Garside, Head of Social Studies and PSE Coordinator.

#### Health Education

The National Curriculum includes provision for a number of cross-curricular themes, competences and dimensions. Health education is one of these and is an integral part of the curriculum in a number of subject areas including Science, Technology and Physical

Education, as well as being part of more general discussions with group tutors and Heads of Year.

Time with group tutors is also valuable for delivering a pastoral curriculum which incorporates a number of these themes and develops good study habits. A number of other lessons each year are also set aside to discuss key personal and social education issues.

One aspect of our PSE programme is the provision of information and advice regarding drugs and other social issues. During the year there will be occasions when the school will enlist the support of the School Police Liaison Officer with a variety of interventions including sniffer dogs for screening.

#### Sex Education

The stated aims of the sex education policy are as follows:

- to equip pupils to be personally and socially effective by providing learning experiences in which pupils can develop skills, explore attitudes, values, personal qualities and acquire and apply appropriate knowledge and understanding within the sexual aspect of their lives at age appropriate key stages
- to develop pupils' self esteem and personal responsibility so that they become adults who can experience fulfilling personal and sexual relationships
- to prepare pupils for the challenges, choices and responsibilities of their developing sexuality and maturing fertility
- to empower pupils to participate in their communities as active citizens who take responsibility for their sexual behaviour
- to foster and encourage positive attitudes and behaviour towards members of the community whose sexuality is different from their own



### Ready to Learn

Prestatyn High School has high expectations for its pupils. We want to inspire them to be well qualified and socially capable young people who participate in all aspects of school life. We want our pupils to have a positive experience in school and to leave us with aspirations for their future which build on the skills they learnt in school. Our behaviour policy, Ready to Learn, is in place. It aims to support these principles and encourage good conduct and motivation from all our pupils.

**The policy has just three, simple school rules which all of our pupils are expected to follow. They are: to be Ready; to be Respectful and to be Safe.**

### Praise and Reward

The praise and recognition structure allows pupils who meet and exceed our expectations to be recognised through a reward system, based on their attendance and engagement in learning. Pupils are ranked Gold, Silver and Bronze over a half term period and receive amazing rewards celebrating their participation across the school.

It is an exciting system that has been developed with the student council, Heads of Year and Heads of Department. It is a whole school recognition system where positive attitudes are consistently rewarded. A special Awards Evening where parents/carers are invited to celebrate these achievements with pupils and staff takes place annually to celebrate those pupils nominated by departments for work and other achievements. We also showcase our Year 11 Leavers in our annual Record of Achievement ceremony.



### Classroom Expectations and Behaviour

All pupils have the right to lessons free from disruption by others, for their property to be respected and to be free from either verbal or physical intimidation at all times in school.

In order to support these aims, the **Read to Learn** policy operates a warning system with a hierarchy of consequences for those who choose to persist in inappropriate conduct. Consequences may include: temporary removal to another class, detention and, in serious cases, a period working in the Isolation Room. In all serious circumstances, parents are informed. Where a detention is set after school, 24 hours notice will be given. It is a parent's responsibility to arrange transport home if an after school detention is set in this way.

### Our Community

The same expectations of behaviour and conduct apply at all times when the school duty of care applies. This will usually be during the school day and on other special occasions associated with the school and/or on other special occasions by the school such as work experience placements, educational visits, and behaviour when wearing school uniform. The Ready to Learn policy will be applied in proportion to the seriousness of the behaviour; whether the reputation of the school has been affected; whether the behaviour is a breach of the school's rules; the impact on the orderly running of the school; the impact on other members of the school; the impact on the orderly running of the school; the impact on other members of staff; and the impact on future opportunities.

---

## Penaethiaid Adrannau

### Department Heads

---

**Head of English** - Mrs T Povey  
**Head of Maths** - Ms E Morley  
**Head of Science** - Mrs M Morecombe  
**Head of Modern Foreign Languages** - Mrs V Vick  
**Head of Welsh** - Mrs S Bennett  
**Head of Geography** - Mrs K Skeffington  
**Head of History** - Mr G Bennett  
**Head of Creative Arts** - Mrs H Bennett  
**Head of PE** - Mr C Evans  
**Head of Applied Learning** - Mrs P Hill  
**Head of ICT** - Miss R Haydock  
**Head of Additional Learning Needs** - Mr M Berry  
**Head of Social Studies** - Mrs K Garside  
**Literacy Coordinator** - Mrs T Vincent  
**Numeracy Coordinator** - Mrs A Bristow  
**Careers & World of Work Coordinator** - Miss L Larter  
**Personal & Social Education Coordinator** - Mrs K Garside  
**Bilingualism Coordinator** - Ms L Macgillivray

---

## Achwyniadau

### Complaints

Anyone with concerns should contact the school, normally asking to speak to the relevant Head of Year or Head of Department. If issues cannot

be resolved, senior staff and the Headteacher can be involved. The formal complaints procedure is available on request.

---

to pupils either on or off the school site during the school day. This may include, but is not limited to, any behaviour that may be deemed to be inappropriate or likely to cause harm or distress to other pupils. These include: behaviour on activities arranged by the school; behaviour on the school site; behaviour on the school uniform in a public place. Sanctions in line with the severity of the misbehaviour; the extent to which the pupil(s) in question were readily identifiable as being a member of the school and/or threat to another pupil or other pupils. The school will also take an interest



## Cwricwlwm Cyfnod Allweddol 3

### Curriculum Key Stage 3

All year 7 pupils will follow the new Curriculum for Wales. The curriculum aims to make pupils Enterprising creative contributors, Ambitious capable learners, Healthy confident individuals, and Ethical informed citizens. We strive to make our curriculum appropriate to pupils needs using teaching styles that develop positive attitudes to learning, understanding of concepts and the acquisition of new knowledge and skills. The content of the curriculum is broad, balanced and relevant whilst retaining subject specialism which will aid pupils with achieving the best outcomes at examination level. We also place high value on the cross curricular skills of literacy, numeracy and digital competence and these are embedded into all subjects. At Prestatyn High we aim to make each pupil a self-directed learner, so developing the skills to learn effectively is a priority.

**At Prestatyn High School we are creating learners who:**

**ASPIRE** to great things

Have a desire to **CREATE** and be enterprising

Are inspired to **LEARN** new and interesting things

**THINK** for themselves and make good choices

Are encouraged to **GROW** in confidence, health and understanding

**ACHIEVE** goals which will set them up for their whole lives

**ENJOY** learning, now and through the rest of their lives.

#### Year 7

English  
Mathematics  
Science  
Welsh  
French  
Music  
Art  
Design & Technology  
Physical Education  
History  
Geography  
Religious Education  
Information Technology  
Drama

#### Year 8

English  
Mathematics  
Science  
Welsh  
History  
Geography  
Religious Education  
Design & Technology  
Art  
Music  
Information Technology  
Physical Education  
French  
Drama

#### Early Options

All Year 8 pupils choose their options at the end of the year. This enables pupils to specialise in subjects during

---

## Anelu'n Uwch

### Aiming High

---

'Aiming High' is the name of our assessment policy in school and aims to ensure that each pupil becomes more involved in improving their own learning.

Personalised learning is all about ensuring that teachers' feedback to pupils via targeted marking and comments is individually focused on:

- ✓ whether each pupil is on the right track
- ✓ how each pupil can improve their own learning
- ✓ how each pupil can think through answers for themselves
- ✓ how each pupil can correct their work

Towards the end of each term/half term, depending on the year group, teachers will complete a progress check showing how well pupils are learning relative to their targets. They will assess engagement, attainment and homework in each subject. This data will be used to create a report to send home to parents/carers.



**Your end of KS  
target is:**

---

---

### Target

Key Stage 3 Levels 3-8.

Key Stage 4 GCSE grades G-A\* (or appropriate grades for the course being studied).

This is the level/grade that we want pupils to aim for by the end of the year in Key Stage 3, or the end of qualification for Years 10 and 11.

Key Stage 5, AS/A2 grades E-A\* (or appropriate grades for the course being studied).

The target is the level /grade that we believe each pupil has a potential to achieve.

### Learning Plans

For each course that the pupils follow there will be a learning plan detailing what they are being taught, what the homework is and where the assessment points are. Parents will have access to learning plans via the school website.

### Engagement and Homework

Engagement and homework grades range from 1 to 4. They show how hard pupils are working in each subject. These grades reflect attitude to work, classroom behaviour, commitment, homework and reliability.

<b>Excellent</b>	<b>1</b>
<b>Good</b>	<b>2</b>
<b>Satisfactory</b>	<b>3</b>
<b>Unsatisfactory</b>	<b>4</b>

Once a pupils work has been assessed. Teachers will advise them on what they have done well and what they need to improve. Pupils will be set a task which helps them to achieve this.

---

## Amdiffyn Plant

### Safeguarding

---

Safeguarding means preventing and protecting children and adults at risk from abuse and neglect and educating those around them to recognise the signs and dangers:  
**Wales Safeguarding Procedures**

**It is everyone's responsibility to keep children safe. Should anyone have any concerns about the wellbeing or safety of any of our learners, they are required to report this to the safeguarding team.**

For further information, please refer to the school's Safeguarding and Child Protection Policy and Keeping Learners Safe 2021. All policies relating to the safeguarding and child protection are available through the school website or by contacting the school.

At Prestatyn High School, the Designated Safeguarding Person is **Mrs Claire Turner**, Deputy Headteacher. The members of staff who support the DSP are:

**Allison Watson** - Student Support Manager  
**Maggie Khsib** - Student Support Manager  
**Michelle Jones** - Student Support Manager  
**Claire Morris** - Behaviour Manager  
**James Williams** - Family Liaison Officer  
**Pam Hill** - Assistant Headteacher

The School Governor with responsibility for Safeguarding is **Mrs Jo Newell**.







---

## Rhaglen Gwaith Cartref

### Homework Programme

---

At the start of each unit of work, Learning Plans for all subjects on blue paper will be placed into books. Each Learning Plan will detail what is being taught, assessed and what homework is being set through the half term.

All homework is photocopied onto yellow paper and stuck into books. You can easily monitor the setting and completion of homework either by asking to see your child's books, which they should bring home regularly, or by looking at the Teaching and Learning section on the school website where you will find copies of the Learning Plans.

### Charging and Remissions Policy

A scheme exists within the Technology Department that enables parents to make a contribution towards the cost of materials that the school provides in lessons, should students want to take their finished product home. There may be other occasions when parents/carers are invited to contribute to additional activities or provision. The school endeavours to support families for whom this may be financially challenging.

An administration charge, currently of £15, is payable by students in Year 12 in line with other post-16 partners.



# OUR TARGET FOR THIS YEAR IS 97%

Currently registration begins at 8.40 a.m. and we expect all pupils to be at their form room by that time. Pupils who are late without good reason will be given detention through the year system.

Any changes to the school day will be communicated to parents well in advance.

The school uses an automated first day absence calling system to inform parents if their child is not in school. It is particularly important that we are contacted with details of any absence to avoid this happening and that contact numbers are up-to- date.

Pupils must sign out at the main office and sign in again on return to school.

After returning from absences, pupils are requested to give an absence note to their group tutor on the day of return. These should be addressed to the Attendance Officer with the dates absent and the pupil's name and form clearly displayed at the top of the letter. We would ask parents/guardians to avoid term time holidays as they are no longer authorised.

SCHOOL SESSION TIMES		
	KS3	KS4
Arrival	08:30	08:30
Registration	08:40	08:40
P1	09:00 10:00	09:00 10:00
P2	10:00 11:00	10:00 11:00
Break	11:00 11:20	11:00 11:20
P3	11:20 12:20	11:20 12:20
Lunch	12:20 13:00	13:20 14:00
P4	13:00 14:00	12:20 13:20
P5	14:00 15:00	14:00 15:00
Enrichment	15:00 -16:00	15:00 -16:00

---

## Llwybrau Dysgu 14-19

### 14-19 Learning Pathways

---

#### Key Stage 4

All learners are entitled to a learning pathway which has 6 key elements:

- 1) Individual Learning Pathways - to meet the needs of each learner
- 2) Wider Choice and Flexibility - from all providers working together
- 3) Learning Core - compulsory courses and some optional subjects and courses
- 4) Learning Coach - entitlement to learning support
- 5) Personal Support - access to personal support when needed
- 6) Impartial Careers Advice and Guidance

#### Learning Core:

English  
Mathematics  
Science  
Religious Education  
(PSE included)  
Physical Education  
Welsh (second language)  
Careers & The World of Work  
Welsh Baccalaureate

In addition pupils may choose from a further list of options:

Business Studies	History	Travel & Tourism
Art & Design	Child Development	Vehicle Maintenance & Repair
Animal Care	Salon Services	Drama
Construction	Spanish	
Creative Arts	Information Technology	
Cymraeg / Welsh	Hospitality	
French	Health & Social Care	
Computing	Physical Education	
Geography	Public Services	
Welsh Baccalaureate	Sport	

*\* Current options may be subject to change  
Separate options booklets are available on entry for KS4 and KS5 students.*

#### Exam Entry Policy

It is the policy of the school to encourage all pupils to enter external examinations, with the exceptions only being if coursework has not been completed or if attendance has been irregular. A parents' evening is held prior to entries being made.

Various examination boards are used by the school including WJEC, Edexcel, OCR etc. Post 16 re-sits are chargeable in line with other local providers.



---

## Gyrfaoedd A Byd Gwaith

### Careers and the World of Work

---

At Prestatyn High School we believe careers education and guidance is more important than ever before. Career planning skills are crucial if our young people are to cope with the changes, challenges and opportunities that the modern world presents.

Our pupils are encouraged to make realistic and informed decisions about their future. This is evident in all lessons but focused particularly through the pastoral curriculum programme in Years 7-9 and careers advice in Years 10 and 11. Careers Wales supports the school's career education provision by providing impartial careers information and guidance to all pupils and parents. Careers advisors are available for interview with individual pupils and parents to assist with their career decisions. They can be contacted through the school's Careers and World of Work Co-ordinator, Miss L Larter.



#### **Careers Wales Office**

Stations Buildings  
Station Square  
Bodfar Street  
Rhyl  
LL18 1AT  
(01745 330012)

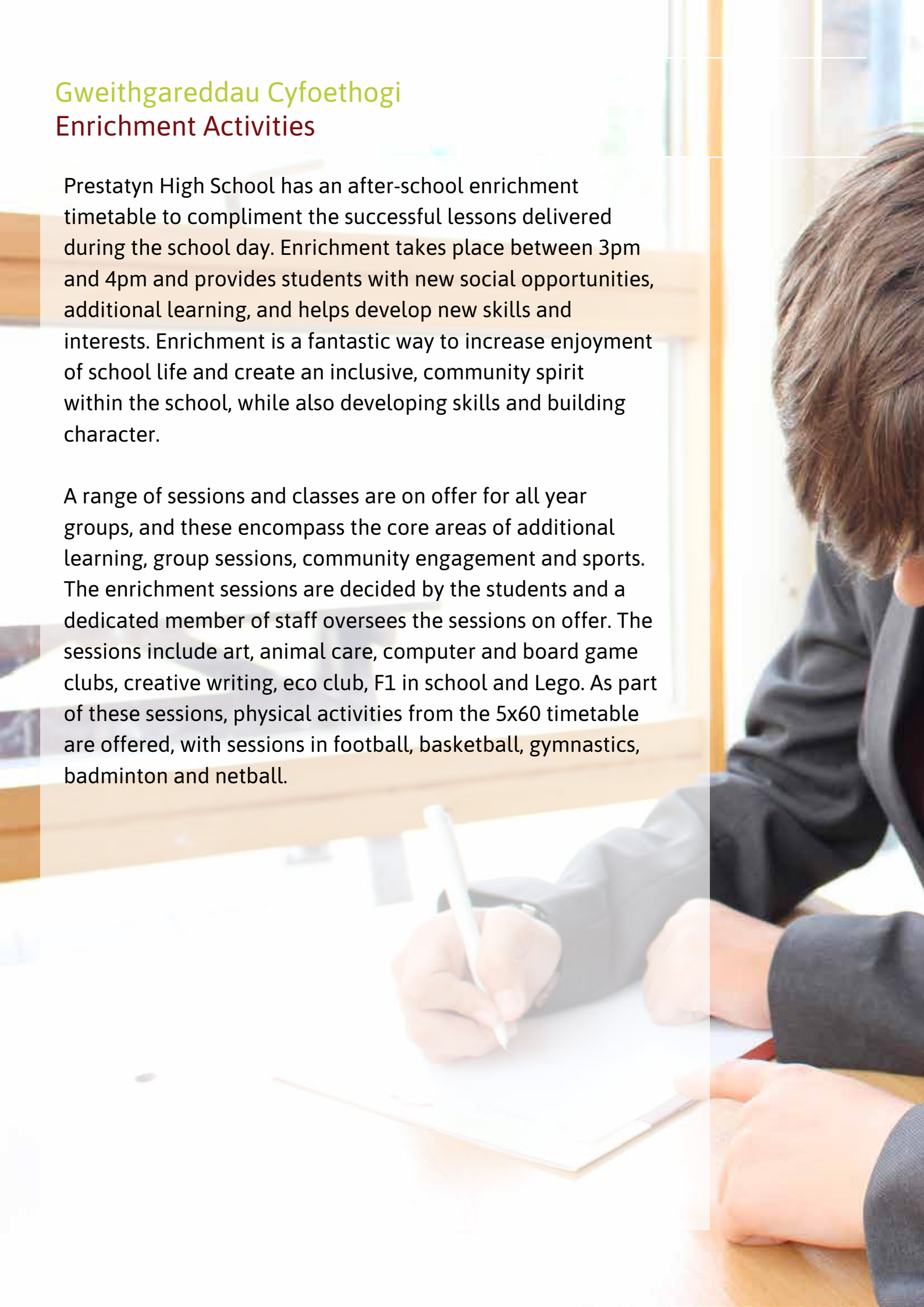




## Gweithgareddau Cyfoethogi Enrichment Activities

Prestatyn High School has an after-school enrichment timetable to compliment the successful lessons delivered during the school day. Enrichment takes place between 3pm and 4pm and provides students with new social opportunities, additional learning, and helps develop new skills and interests. Enrichment is a fantastic way to increase enjoyment of school life and create an inclusive, community spirit within the school, while also developing skills and building character.

A range of sessions and classes are on offer for all year groups, and these encompass the core areas of additional learning, group sessions, community engagement and sports. The enrichment sessions are decided by the students and a dedicated member of staff oversees the sessions on offer. The sessions include art, animal care, computer and board game clubs, creative writing, eco club, F1 in school and Lego. As part of these sessions, physical activities from the 5x60 timetable are offered, with sessions in football, basketball, gymnastics, badminton and netball.







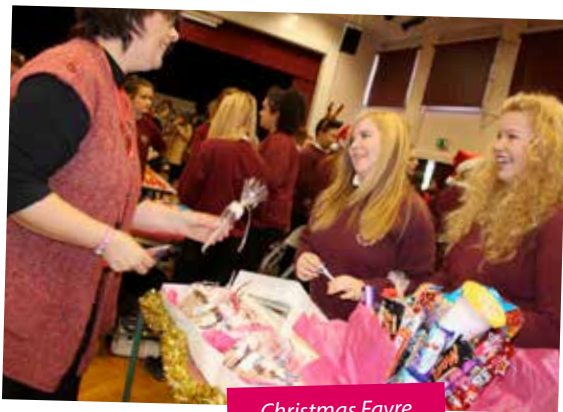
---

## Teithiau ac Cyfleoedd School Trips & Opportunitites

---



Careers Fair



Christmas Fayre



School production - Blood Brothers



Liverpool Art Trip



Glyndŵr University - Cell Dome



Madrid



USA



France



Iceland

A Duke of Edinburgh Programme is a real adventure from beginning to end. It doesn't matter who you are or where you're from; you just need to be in Year 10 or above and realise there's more to life than sitting on a sofa watching life pass you by.

Programmes are at three levels: Bronze, Silver or Gold.

You achieve an award by completing a personal programme of activities in four sections (five if you're going for Gold). Volunteering, physical, skills, expedition and for Gold, a residential.

You'll find yourself helping people or the community, getting fitter, developing skills, going on an expedition and taking part in a residential activity (Gold only).

But here's the best bit - you get to choose what you do!

Your programme can be full of activities and projects that will get you buzzing. Along the way you'll pick up experiences, friends and talents that will stay with you for the rest of your life.





# Côd Gwisg Ysgol

## Dress Code

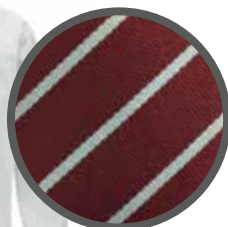
### Official PHS Blazer

Winterbottom PHS logo with contrasting



### White Shirt

Plain long sleeve white shirt



**Official PHS Tie**  
Horizontal  
maroon striped  
twill tie

### Jumper\*

Plain knit maroon V-neck \*(Optional)



### Girls Skirt/Kilt

Winterbottom 'Auld Lang Syne' kilt

### Boys/Girls Trousers

Harrow grey tailored trousers



### Boys Shorts\*

Harrow grey \*  
(Optional summer term only)



**Essential quarter zip softshell top**



**Essential training tee**



**Essentials LS Multisport Top**

### Essentials Leggings



**MITRE Mercury  
Contrast Sock**



**Essential training  
short**

*Shin pads and gum shields are strongly recommended for football, hockey and rugby.  
No jewellery to be worn during PE lessons. Notes are required from all students who are unable to participate in P.E. lessons at any time.*

**To avoid confusion please remember:**

No visible piercings are allowed other than one stud/sleeper per ear and only one flat ring. Anyone planning a piercing should book it for the summer holiday so it is healed by September as it will have to be removed for school.



Too large and decorative earrings.  
**Not acceptable!**



Smaller than a 5p piece.  
**Acceptable!**

**Mobile phone policy:**

Phones must be switched off during lessons and assemblies etc. Incorrect use may result in phones being confiscated until the end of the day. Anyone found with inappropriate content on their phone may have their device confiscated and the police may be informed.

**We will also pursue any inappropriate use of social media such as Facebook, Twitter and Snapchat etc through the appropriate channels. This may include the police.**



**Shoes**

Black low heel. All black footwear no coloured logos. If they are all black, then they are a shoe.

**Socks & Tights**

Socks should be black, grey or white and above the ankle. Girls tights in black or grey.



The school uniform for Prestatyn High School is on sale in the following local suppliers:

**Jean Emporium, 3 Sussex Street Rhyl and 1st Class Clothes, 12 High Street, Prestatyn.**

Other items of school uniform (shirts and trousers etc) can be sourced elsewhere.

These details are provided for information as the school does not comment on price, quality etc.

**\* Pupils entering Year 7 may be eligible for a Pupil Deprivation Grant. Information of how to apply for this grant will be available on the Denbighshire County Council website this summer. [www.denbighshire.gov.uk](http://www.denbighshire.gov.uk)**

**Education Department of Denbighshire County Council, Wynnstay Road, Ruthin, Denbighshire, LL15 1YN.**

---

## Gwarchodaeth, Iechyd a Diogelwch Ysgol

### School Security, Health & Safety

---

The health and safety of everyone who attends and works at Prestatyn High School is paramount. The Health and Safety Committee of the Governing Body meets half termly to consider any issues that have arisen, receive reports and plan for improvements. A representative from Denbighshire County Council attends these meetings. School Council representatives have on occasions also been present to put forward ideas.

In order to improve school security further, a system of automatic security doors has been introduced so that the premises are locked during lessons. Anyone can vacate the building but security fobs are required to gain access from outside, apart from at lesson changes and at designated breaks, when the doors are released automatically.

The building will remain locked in the mornings until 8.00 a.m. when any early arrivals can gain access, but only by the door near the Library. Such pupils must remain in the Library or Snack Centre which will be supervised until 8.30 am when they will be allowed to enter the rest of the school. Parents and carers are asked to ensure no pupil arrives before 8.00 a.m. as they will not be able to gain access to the building. At the end of the day, the school will again be secure with all visitors directed to the main reception.

The main reception is the point of access for visitors at any time. All other access doors remain locked and closely monitored to ensure the safety of the school site. On the rare occasions when outside intruders enter the site, records are kept and reported to the police as required. Warning signs refer to the implications of inappropriate conduct by visitors.

The Healthy Schools' Programme is monitored by a teaching postholder who co-ordinates curricular coverage of health related themes as well as regular extra-curricular activities. The school nurse visits regularly and the school is covered by our team of staff trained to support us in first aid. Please note our team are only there for emergency first aid, so please do not send your child to school if they are extremely unwell or likely to need medical attention during the day.

#### **Summer School**

For the last 5 years, Prestatyn High School has offered our sector-leading summer holiday programme, 'Food and Fun', for the new Year 7 students who start with us in September. The programme runs for 3 weeks over the summer holidays, and new students get to meet teachers and staff, make new friends, and learn and have fun in a safe environment. The project is aimed at reducing anxiety, increasing engagement, and increasing physical activity in school holidays. The sessions incorporate exercise, healthy eating, engagement, fun activities and educational sessions.

Over the summer holidays, our programme was attended by over 100 Year 6 students from over 15 primary schools and was a huge success, with feedback from children and parents being overwhelmingly positive. Children have expressed that they felt more confident about starting in September and parents commented that their children thoroughly enjoyed the experience.



***“Students have positive attitudes to learning and behave well. Parents and carers are very happy that the school keeps their children safe.”***

**Year 7 Parent**



---

# Prospectws yr Ysgol School Prospectus 2023-2024

---

## **Ysgol Uwchradd Prestatyn High School**

2 Princes Avenue, Prestatyn Denbighshire LL19 8RS

**Telephone:** 01745 852312

**Fax:** 01745 855204

**www.prestatynhighschool.co.uk**

**Email:** prestatyn.high@denbighshire.gov.uk

**Headteacher:** Mr N Foley B.Sc MA.

**Chair of Governors:** Mrs L Davenport

NOR: 1599

## **A.A.Li/LEA**

Geraint Davies

Pennaeth Addysg Dros Dro / Interim

Head of Education

Swyddfeydd y Cyngor / County Hall

Ffordd Wynnstay / Wynnstay Road

Rhuthun / Ruthin

Sir Ddinbych / Denbighshire

LL15 1YN