

**Ysgol Uwchradd
Prestatyn
High School**



Prospectws yr Ysgol
School Prospectus

2021-22

Croeso I Ysgol Uwchradd Prestatyn Welcome to Prestatyn High School



Prestatyn High School is improving rapidly in all areas and I am honoured to be the Headteacher of such a vibrant and successful school. Joining Prestatyn High will guarantee an excellent education, very high standards and outcomes that will allow your son or daughter to move onto the next stage of their academic life with the right skills, qualifications and attitudes. We are determined to improve the life chances for all the young people in the Prestatyn area and beyond.

We are exceptionally proud of all pupils and staff and these amazing results reinforce our belief that what we are doing day to day is the right thing to do and that the high standards we hold are having an impact.

Alongside this we are continuing to renovate and improve many areas of the school building to give all of our learners the best educational experience possible. These changes and improvements are just another step in our journey towards excellence. We are improving every aspect of the school, putting the pieces into place to make our school a beacon of learning and excellence. These improvements and the outstanding school uniform have allowed us to continue to transform Prestatyn High and its community, further raising our aspirations and expectations of what is possible. The future is very bright for all learners at our great school.

In our latest visit by Estyn we were judged to be making 'Good progress' in all areas. My passion is for all our learners to be challenged and supported to achieve their very best. The staff here at Prestatyn

High work tirelessly to ensure our pupils and students enjoy their time at school, work hard and achieve good outcomes. In an ever changing education landscape, our focus is fixed firmly on strategies to further improve the quality of teaching, learning, assessment, personal development, behaviour and welfare for all our young people. This first class education will provide them with the knowledge to achieve well in examinations whilst developing lifelong skills that will prepare them for their future.

Here at Prestatyn High we embed Literacy, Numeracy and IT skills in all we do, ensuring that all pupils are ready to make their way in the world and society. We strive that all pupils, no matter their starting point or background, make rapid and sustained progress. The opportunities available to learners at Prestatyn High are as numerous as they are varied. The broad curriculum empowers learners to progress well and achieve the very best academic qualifications.

Further information is available on our website www.prestatynhigh.co.uk

If you would like to visit the school please phone to make an appointment.

Headteacher
Mr N Foley B.Sc. MA.

Derbyniadau Admissions

Admissions to the school depend on the official admission numbers calculated by the local education authority. Applications received by the published date (05/11/21) up to the official number are usually successful regardless of where the applicant lives or goes to school. Over subscription criteria will apply if the admission number is exceeded. This year (2021-22) we admitted 240 to Year 7 which is below the official number of 286. The admission number for 2021-22 is 286. If relevant, oversubscription criteria apply in the following rank order:

1. Pupils for whom there are exceptional social reasons (e.g. looked after children), which in the opinion of the Corporate Director for Lifelong Learning, justify admission to the school.
2. Pupils for whom there are exceptional medical or educational reasons, which in the opinion of the Corporate Director of Lifelong Learning justify admission to the school.
3. Pupils who are residents within the intended geographical area (or designated catchment area, where defined) that the school is intended to serve.
4. Pupils for whom it is the nearest school suitable for their age, parental language preference (designated Welsh Medium Schools) or parental denominational preference (controlled schools) as measured by walking distance from the nearest available school gate to the pupil's home.
5. Siblings of pupils already admitted under point 2, 3, 4.
6. Pupils living nearest to the school, measured by the shortest walking distance from the nearest available school gate to the pupil's home.



An appeal procedure operates as explained in the information guide. Applications for admission into other year groups are referred to Denbighshire County Council. All queries should be directed to County Hall Ruthin **01824 706101**. Prospective parents/carers may wish to view the school, in which case they should contact the school office to make an appropriate appointment

Apply for school online

Denbighshire is offering the chance to apply for places in secondary school for September 2021 online at www.denbighshire.gov.uk

**Deadline for application admissions
5th November 2021**



Pontio Transition

Prestatyn High School has a close working relationship with each of our feeder primary schools. We work collaboratively with them to make the transition process as smooth and enjoyable as possible. We visit each school regularly throughout the year to gather information about individual pupils in order to plan effectively for their arrival. We also put on extended transition activities for all schools to make the move up to secondary school as successful as possible.

“We welcome all students from inside or outside the Prestatyn area and place them carefully to ensure that their learning is fully supported.”

Mr D North - Head of Year 7 / Transition Coordinator



“Making ‘Good progress’ in all areas.”

Estyn 2018

Our Feeder Primary Schools

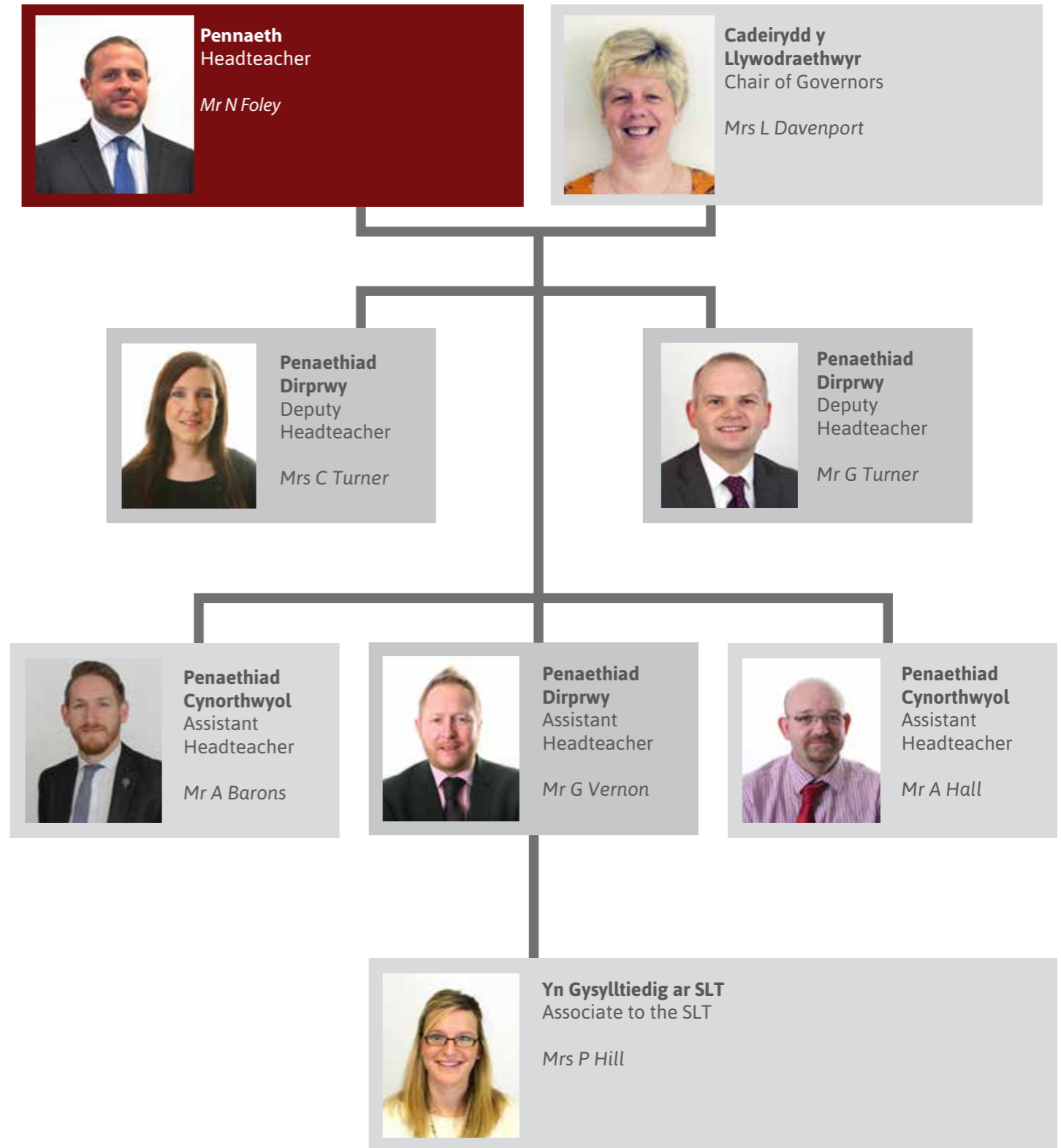
Bodnant Community School
Ysgol Clawdd Offa
Ysgol Hiraddug
Ysgol Penmorfa
Ysgol Trelogan

Ysgol Bryn Garth C P School
Ysgol Gronant
Ysgol Melyd
Ysgol Trelawnyd

The highest expectations and standards.

Rapid and sustained progress for all.

Tim Rheoli
Senior Leadership Team

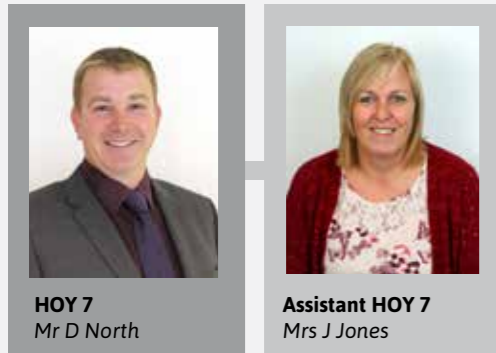


Pennaeth blwyddyn Heads of Year

All pupils are allocated a place in one of our form groups, named after the planets, on their arrival to Year 7. In Year 7, pastoral care is led by Head of Year Mr D North. Form groups are designed around friendship groups to support our new pupils and to allow them to settle into their new school with the minimum of disruption.

The Head of Year, their Deputy and Assistant Head of Year are responsible for the daily care of each pupil. The Assistant works closely with the Head of Year to provide counselling, guidance and discipline. Please contact the pastoral teams if you have any concerns throughout the year.

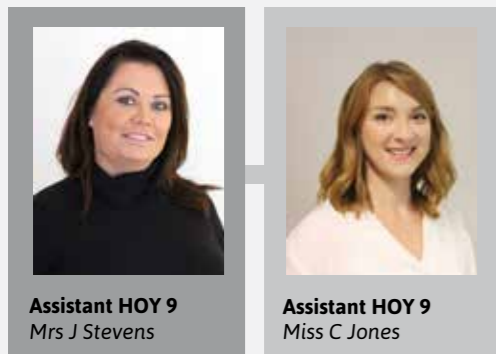
Year 7



Year 8



Year 9



Year 10



Year 11



Y Cwricwlwm Cymreig a Dwyieithrwydd Y Cwricwlwm Cymreig & Bilingualism



Do you want to be part of the Welsh enrichment form group?

Students who have a keen interest in speaking the Welsh language have the opportunity to be in a Welsh enrichment form class. The class would have a Welsh registration teacher and be expected to use Welsh speaking and listening skills during this time. The long term proposal is to improve GCSE Welsh grades and to nurture the use of Welsh. We also offer the opportunity to be part of the Urdd activity group.

For more details, contact:-
Mrs E Williams



Whilst Prestatyn High School is an English medium school, the Welsh culture and language is evident throughout the school. Pupils are encouraged to use incidental Welsh in all their lessons e.g. when answering the register; asking for equipment; in assemblies; and whenever the opportunity arises.



Bilingualism

Mrs E Williams is our Bilingualism Coordinator, visits schools as part of the transition process to support Welsh learners. We are always exploring new ideas to encourage this national priority such as the Welsh - enrichment form classes and transition projects.

Gofal, cymorth ac arweiniad Care, Support & Guidance

Prestatyn High is a very caring school that provides an environment and ethos that enables all students to achieve. We are a fully inclusive comprehensive school with a well defined support strategy and pastoral system which is designed to meet the needs of all our students.



S.P.Y. (Sixth Formers Protecting You)

This peer network has been supporting pupils since 2000. Committed Sixth Form students undergo training that will equip them with the skills to deal with a range of emotional and social issues experienced by our younger students.

Student Support Team

The Assistant Heads of Year support the emotional, social and behavioural needs of the students in their year group. They, along with the Heads of Year identify problems, target interventions, and support students of all ages.

Buddies

In Year 10 students get the opportunity to become ambassadors for Prestatyn High School by applying to join our peer support team - 'The Buddies'. Buddies go through a full day of training which is based on the Childline CHIPS package and supervised by the Student Support Team and transition teachers.

Buddies are on duty throughout the whole school year to provide support and guidance to Year 7 and other new students who arrive at Prestatyn High School. They are on hand to explain how the school works and answer any questions or worries the new students may have. Buddies are expected to work as a team and liaise with Student Support Team to maintain a good level of communication. Our Buddies' motto is to **'Have fun, help out and learn as much as we can'**.

Additional Learning Needs

The ALN Department is committed to supporting all students with Additional Learning Needs. Some pupils are invited to join an extended transition programme to support the move to the next phase of their education. We regularly liaise with parents on their child's progress and recognise the importance of developing positive home / school links in working together to ensure that all pupils reach their full potential.

Gofal, cymorth ac arweiniad Pupil Welfare & Safety

Anti-Bullying Policy

As a school we take the issue of bullying very seriously. Whatever the cause, bullying will never be tolerated at Prestatyn High School and we will do all we can to address issues that we are made aware of, even though no school can claim to be completely free of bullying. All incidents are treated seriously and parents are invited to contact the school if they have any concerns. A copy of the school's anti-bullying policy is available on request.

I SPY Community Anti-Bullying Campaign Prestatyn High has been one of the founder members of a community project aiming to bring together all organisations in the area who work with young people in order to stamp out bullying. I Spy includes all schools, youth clubs, voluntary organisations, the police and Prestatyn Town Council. We aim to coordinate systems, improve communication, and educate those involved, especially in aspects such as cyber bullying, to ensure Prestatyn is a safe area for young people of all ages.

Datganiad wrth-ormesu Statement on bullying

Our definition of bullying states:

Bullying is something is deliberately hurtful which is repeated over a period of time. This can be physical or emotional. bullying makes it difficult for the victims to defend themselves.





Parent Teacher Association

The school would like to relaunch the PTA this year and we are asking parents to put themselves forward to join this great association.

Meetings

Meetings will be held half termly in school and all parents are invited to attend the meetings which are informal and friendly.

Social and Fundraising

PTA committee members will arrange social and fundraising events and are always on the lookout for new members and ideas. Any proceeds are distributed annually to support projects and activities to enrich school life for the pupils.

Join

If you are interested in either joining the committee or helping with particular events, please contact the Head's PA **Mrs L Thomas** (c/o Prestatyn High School).

Such involvement is certainly a most useful way of supporting the school and your child.



School Council

The School Council, plays an active and successful role in improving the school environment and in reviewing school policies. House Councils also support the work carried out by the School Council. Pupils are also involved in making decisions through the Sports Ambassadors, Fair Trade and Eco School committees. Associate Pupil Governors provide a valuable link between pupils and the governing body.

Religious Education

Parents who wish to withdraw their children from either Religious Education or assemblies should make an appointment to discuss the matter with the Headteacher.

Sex Education

The stated aims of the sex education policy are as follows:

- to equip pupils to be personally and socially effective by providing learning experiences in which pupils can develop skills, explore attitudes, values, personal qualities and acquire and apply appropriate knowledge and understanding within the sexual aspect of their lives at age appropriate key stages
- to develop pupils' self esteem and personal responsibility so that they become adults who can experience fulfilling personal and sexual relationships
- to prepare pupils for the challenges, choices and responsibilities of their developing sexuality and maturing fertility
- to empower pupils to participate in their communities as active citizens who take responsibility for their sexual behaviour
- to foster and encourage positive attitudes and behaviour towards members of the community whose sexuality is different from their own

Health Education

The National Curriculum includes provision for a number of cross-curricular themes, competences and dimensions. Health education is one of these and is an integral part of the curriculum in a number of subject areas including Science, Technology and Physical Education, as well as being part of more general discussions with group tutors and Heads of Year.

Time with group tutors is also valuable for delivering a pastoral curriculum which incorporates a number of these themes and develops good study habits. A number of other lessons each year are also set aside to discuss key personal and social education issues.

One aspect of our PSE programme is the provision of information and advice regarding drugs and other social issues. During the year there will be occasions when the school will enlist the support of the School Police Liaison Officer with a variety of interventions including sniffer dogs for screening.

Dewis Llwyddo

'Ready to Learn' Behaviour & Motivation

Ready to Learn

Prestatyn High School has high expectations for its pupils. We want to inspire them to be well qualified and socially capable young people who particulate in all aspects of school life. We want our pupils to have a positive experience in school and to leave us with aspirations for their future which build on the skills they learnt in school. Our behaviour policy, Ready to Learn, is in place. It aims to support these principles and encourage good conduct and motivation from all our pupils.

The policy has just three, simple school rules which all of our pupils are expected to follow. They are: to be Ready; to be Respectful and to be Safe.

Praise and Reward

The praise and recognition structure allows pupils who meet and exceed our expectations to be recognised through a reward system, based on their attendance and engagement in learning. Pupils are ranked Gold, Silver and Bronze over a half term period and receive amazing rewards celebrating their participation across the school.

It is an exciting system that has been developed with the student council, Heads of Year and Heads of Department. It is a whole school recognition system where positive attitudes are consistently rewarded. A special Awards Evening where parents/carers are invited to celebrate these achievements with pupils and staff takes place annually to celebrate those pupils nominated by departments for work and other achievements. We also showcase our Year 11 Leavers in our annual Record of Achievement ceremony.



Classroom Expectations and Behaviour

All pupils have the right to lessons free from disruption by others, for their property to be respected and to be free from either verbal or physical intimidation at all times in school.

In order to support these aims, the **Read to Learn** policy operates a warning system with a hierarchy of consequences for those who choose to persist in inappropriate conduct. Consequences may include: temporary removal to another class, detention and, in serious cases, a period working in the Isolation Room. In all serious circumstances, parents are informed. Where a detention is set after school, 24 hours notice will be given. It is a parent's responsibility to arrange transport home if an after school detention is set in this way.

Our Community

The same expectations of behaviour and conduct apply to pupils either on or off the school site during the time when the school duty of care applies. This will usually mean during term time when the pupil is readily associated with the school and/or on other special occasions. These include: behaviour on activities arranged by the school such as work experience placements, educational visits and sporting events; behaviour on the way to and from school; and behaviour when wearing school uniform in a public place. Sanctions in line with the Ready to Learn policy will be applied in proportion to the severity of the misbehaviour; the extent to which the reputation of the school has been affected; whether the pupil(s) in question were readily identifiable as members of the school; the impact on the orderly running of the school and/or threat to another pupil or member of staff; and the impact on future opportunities for other pupils. The school will also take an interest

Penaethiaid Adrannau

Department Heads

Head of English - Ms E Davies

Head of Maths - Ms E Morley

Head of Science - Mrs M Morecombe

Head of Modern Foreign Languages - Mrs V Vick

Head of Welsh - Mrs S Bennett

Head of Geography - Mrs K Skeffington

Head of History - Mr G Bennett

Head of Creative Arts - Mrs H Bennett

Head of PE - Mr C Evans

Head of Applied Learning - Mrs P Hill

Head of ICT - Mrs D James

Head of Additional Learning Needs - Mr A Christian

Head of RE - Mrs K Garside

Literacy Coordinator - Mrs T Vincent

Numeracy Coordinator - Mrs A Bristow

Careers & World of Work Coordinator - Miss L Larter

Personal & Social Education Coordinator - Mrs K Garside

Bilingualism Coordinator - Mrs E Williams

Achwyniadau

Complaints

Anyone with concerns should contact the school, normally asking to speak to the relevant Head of Learning or Head of Department. If issues cannot

be resolved, senior staff and the Headteacher can be involved. The formal complaints procedure is available on request.



Cwricwlwm Cyfnod Allweddol 3 Curriculum Key Stage 3

Curriculum

We strive to make our curriculum appropriate to pupils needs using teaching styles that develop positive attitudes to learning, understanding of concepts and the acquisition of new knowledge and skills. The content of the curriculum is broad, balanced and relevant. Pupils study the National Curriculum and Religious Education.

We have invested significantly in communication and technology and are continually updating our school systems to respond to the changing digital climate.

We aim to make each pupil a self-directed learner, so developing the skills to learn effectively is a priority. We also emphasise the importance of developing literacy, numeracy and digital literacy skills, as we believe they are central to success in school and beyond.



Year 7

English
Mathematics
Science
Welsh
French
Music
Art
Design & Technology
Physical Education
History
Geography
Religious Education
Information Technology
Drama

Year 8

English
Mathematics
Science
Welsh
History
Geography
Religious Education
Design & Technology
Art
Music
Information Technology
Physical Education
French
Drama

Early Options

All Year 8 pupils choose their options at the end of the year. This enables pupils to specialise in subjects during

Anelu'n Uwch Aiming High

'Aiming High' is the name of our assessment policy in school and aims to ensure that each pupil becomes more involved in improving their own learning.

Personalised learning is all about ensuring that teachers' feedback to pupils via targeted marking and comments is individually focused on:

- ✓ whether each pupil is on the right track
- ✓ how each pupil can improve their own learning
- ✓ how each pupil can think through answers for themselves
- ✓ how each pupil can correct their work

Towards the end of each term/half term, depending on the year group, teachers will complete a progress check showing how well pupils are learning relative to their targets. They will assess engagement, attainment and homework in each subject. This data will be used to create a report to send home to parents/carers.



Your end of KS target is:

Target

Key Stage 3 Levels 3-8.
Key Stage 4 GCSE grades G-A* (or appropriate grades for the course being studied).
This is the level/grade that we want pupils to aim for by the end of the year in Key Stage 3, or the end of qualification for Years 10 and 11.
Key Stage 5, AS/A2 grades E-A* (or appropriate grades for the course being studied).
The target is the level /grade that we believe each pupil has a potential to achieve.

Learning Plans

For each course that the pupils follow there will be a learning plan detailing what they are being taught, what the homework is and where the assessment points are. Parents will have access to learning plans via the school website.

Engagement and Homework

Engagement and homework grades range from 1 to 4. They show how hard pupils are working in each subject. These grades reflect attitude to work, classroom behaviour, commitment, homework and reliability.

Excellent	1
Good	2
Satisfactory	3
Unsatisfactory	4

Once a pupils work has been assessed. Teachers will advise them on what they have done well and what they need to improve. Pupils will be set a task which helps them to achieve this.

Amdiffyn Plant Safeguarding

Schools have an important role in recognising and referring alleged cases of abuse to social services in line with the All Wales Child Protection Procedures. The school cannot exercise any discretion over cases even though we appreciate the sensitivities involved and on occasion parental consent may not be sought. The following paragraphs give the legal position in which we operate:

'If any person has knowledge, concerns or suspicions that a child is suffering, has suffered or is likely to be at risk of harm, it is their responsibility to ensure that the concerns are referred to Social Services or the Police, who have statutory duties and powers to investigate and intervene when necessary.' (Section 2.1 All Wales Child Protection Procedures 2008.)

'The child's welfare is paramount; safeguarding and promoting his / her welfare is the priority and overriding purpose of the work. When decisions about the child's future are being taken, his / her wishes and feelings must be taken into account, as well as needs arising from race, culture, religion and language.' (Section 1.1 Children Act 1989)



Use of Reasonable Force & Restrictive Physical Intervention Policy & Use of 'Time Out'. In order to ensure the safety of all members of the school community and visitors, the school may on occasion have to resort to the use of reasonable force, a restrictive physical intervention, or 'Time Out'.

Section 93 of the Education and Inspections Act 2006, replaced Section 550A of the Education Act 1996, and enables school staff to use such force as is reasonable in the circumstances to prevent a pupil from doing, or continuing to do, any of the following:

- committing any offence (or, for a pupil under the age of criminal responsibility, what would be an offence for an older pupil);
- causing personal injury to, or damage to the property of, any person (including the pupil himself); or
- prejudicing the maintenance of good order and discipline at the school or among any pupils receiving education at the school, whether during a teaching session or otherwise.

The complete policy on the use of reasonable force and restrictive physical intervention is available on the school's website or as a hard copy on request.

Screening, Searching and Confiscation
As part of the school's behaviour policy and under section 89 of the Education and Inspection Act 2006 the school might have to conduct searches for prohibited items. This could include looking through pupils' bags and lockers and asking them to turn out their pockets.

Prohibited items include items such as cigarettes and other tobacco products, pornography, fireworks, drugs, weapons, alcohol and stolen items.

If a pupil refuses, it may be necessary to contact the police to carry out a search. In this case parents will be contacted.



Rhaglen Gwaith Cartref Homework Programme

At the start of each unit of work, Learning Plans for all subjects on blue paper will be placed into books. Each Learning Plan will detail what is being taught, assessed and what homework is being set through the half term.

All homework is photocopied onto yellow paper and stuck into books. You can easily monitor the setting and completion of homework either by asking to see your child's books, which they should bring home regularly, or by looking at the Teaching and Learning section on the school website where you will find copies of the Learning Plans.

Charging and Remissions Policy

A scheme exists within the Technology Department that enables parents to make a contribution towards the cost of materials that the school provides in lessons, should students want to take their finished product home. There may be other occasions when parents/carers are invited to contribute to additional activities or provision. The school endeavours to support families for whom this may be financially challenging.

An administration charge, currently of £15, is payable by students in Year 12 in line with other post-16 partners.



Presenoldeb School and Attendance

OUR TARGET FOR THIS YEAR IS

97%

Currently registration begins at 8.40 a.m. and we expect all pupils to be at their form room by that time. Pupils who are late without good reason will be given detention through the year system.

Any changes to the school day will be communicated to parents well in advance.

The school uses an automated first day absence calling system to inform parents if their child is not in school. It is particularly important that we are contacted with details of any absence to avoid this happening and that contact numbers are up-to-date.

Pupils must sign out at the main office and sign in again on return to school. After returning from absences, pupils are requested to give an absence note to their group tutor on the day of return. These should be addressed to the Attendance Officer with the dates absent and the pupil's name and form clearly displayed at the top of the letter. We would ask parents/guardians to avoid term time holidays as they are no longer authorised. Attendance for 2018-19 was 95%. We plan to build on this during the coming year.

SCHOOL SESSION TIMES		
	KS3	KS4
Arrival	08:30	08:30
Registration	08:40	08:40
P1	09:00 10:00	09:00 10:00
P2	10:00 11:00	10:00 11:00
Break	11:00 11:20	11:00 11:20
P3	11:20 12:20	11:20 12:20
Lunch	12:20 13:00	13:20 14:00
P4	13:00 14:00	12:20 13:20
P5	14:00 15:00	14:00 15:00
Enrichment	15:00 - 16:00	15:00 - 16:00

Llwybrau Dysgu 14-19 14-19 Learning Pathways

Key Stage 4

All learners are entitled to a learning pathway which has 6 key elements:

- 1) Individual Learning Pathways - to meet the needs of each learner
- 2) Wider Choice and Flexibility - from all providers working together
- 3) Learning Core - compulsory courses and some optional subjects and courses
- 4) Learning Coach - entitlement to learning support
- 5) Personal Support - access to personal support when needed
- 6) Impartial Careers Advice and Guidance

Learning Core: English
Mathematics
Science
Religious Education (PSE included)
Physical Education
Welsh (second language)
Careers & The World of Work
Welsh Baccaulaureate

In addition pupils may choose from a further list of options:

Business Studies	History	Travel & Tourism
Art & Design	Child Development	Vehicle Maintenance & Repair
Animal Care	Salon Services	Drama
Construction	Spanish	
Creative Arts	Information Technology	
Cymraeg / Welsh	Hospitality	
French	Health & Social Care	
Computing	Physical Education	
Geography	Public Services	
Welsh Baccaulaurate	Sport	

** Current options may be subject to change
Separate options booklets are available on entry for KS4 and KS5 students.*

Exam Entry Policy

It is the policy of the school to encourage all pupils to enter external examinations, with the exceptions only being if coursework has not been completed or if attendance has been irregular. A parents' evening is held prior to entries being made.

Various examination boards are used by the school including WJEC, Edexcel, OCR etc. Post 16 re-sits are chargeable in line with other local providers.

Gyrfaoedd A Byd Gwaith Careers and the World of Work

At Prestatyn High School we believe careers education and guidance is more important than ever before. Career planning skills are crucial if our young people are to cope with the changes, challenges and opportunities that the modern world presents.

Our pupils are encouraged to make realistic and informed decisions about their future. This is evident in all lessons but focused particularly through the pastoral curriculum programme in Years 7-9 and careers advice in Years 10 and 11. Careers Wales supports the school's career education provision by providing impartial careers information and guidance to all pupils and parents. Careers advisors are available for interview with individual pupils and parents to assist with their career decisions. They can be contacted through the school's Careers and World of Work Co-ordinator, Miss L Larter, or by contacting Mrs M Williams in the Careers Office located in the Library:



Careers Wales Office

Stations Buildings
Station Square
Bodfar Street
Rhyl
LL18 1AT



Gweithgareddau Cyfoethogi Enrichment Activities

Prestatyn High school has a thriving enrichment timetable that has been made possible due to the new structure of the school day. The school day has been restructured so that we can now offer the students extra sessions in an area of their interest after the school day has ended. This will be an essential part of teaching young people the life skills needed for everyday life with benefits well beyond the classroom. Enrichment is a fantastic way to increase students' enjoyment of school life and create an inclusive atmosphere within the school and community.

Prestatyn High school is committed to providing the best possible learning for the students and will invest in the enrichment timetable throughout the year with activities and opportunities that the students have requested. Students will also have the benefit of the 2 new mini buses to ensure that they can get home following the extended days within school and ensure inclusivity to all.

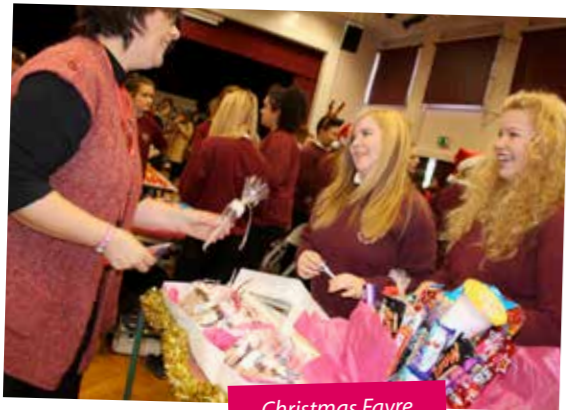
Students who get involved in enrichment activities after the school day ends create a community ethos within the school and, as a result, develops further skills such as team-work, communication and commitment. The opportunities that we have on offer will range from sport to drama clubs along with other specialist clubs that the students have a keen interest in. Enrichment will have the highest expectations and standards for our students and will include qualifications such as GCSEs that can be gained after school.



Teithiau ac Cyfleoedd School Trips & Opportunites



We have a wonderful collection of animals being cared for in our Animal Care department. Students can study a Animal Care at Btec L2&L3



Christmas Fayre



School production - Blood Brothers



Liverpool Art Trip



Glyndŵr University - Cell Dome



Madrid



USA



France



Iceland

A Duke of Edinburgh Programme is a real adventure from beginning to end. It doesn't matter who you are or where you're from; you just need to be in Year 10 or above and realise there's more to life than sitting on a sofa watching life pass you by.

Programmes are at three levels: Bronze, Silver or Gold.

You achieve an award by completing a personal programme of activities in four sections (five if you're going for Gold). Volunteering, physical, skills, expedition and for Gold, a residential.

You'll find yourself helping people or the community, getting fitter, developing skills, going on an expedition and taking part in a residential activity (Gold only).

But here's the best bit - you get to choose what you do!

Your programme can be full of activities and projects that will get you buzzing. Along the way you'll pick up experiences, friends and talents that will stay with you for the rest of your life.



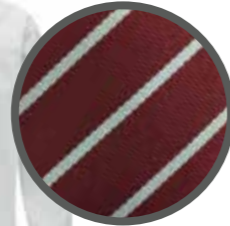
Côd Gwisg Ysgol

Dress Code

Official PHS Blazer
Winterbottom PHS logo with contrasting



White Shirt
Plain long sleeve white shirt



Official PHS Tie
Horizontal maroon striped twill tie

Jumper*
Plain knit maroon V-neck *(Optional)



Boys Shorts*
Harrow grey *
(Optional summer term only)



Girls Skirt/Kilt
Winterbottom 'Auld Lang Syne' kilt

Boys/Girls Trousers
Harrow grey tailored trousers



Essential quarter zip softshell top



Essential training tee



Essentials LS Multisport Top

Essentials Leggings



PE KIT



MITRE Mercury Contrast Sock



Essential training short

*Shin pads and gum shields are strongly recommended for football, hockey and rugby.
No jewellery to be worn during PE lessons. Notes are required from all students who are unable to participate in P.E. lessons at any time.*

To avoid confusion please remember:

No visible piercings are allowed other than one stud/sleeper per ear and only one flat ring. Anyone planning a piercing should book it for the summer holiday so it is healed by September as it will have to be removed for school.



Too large and decorative earrings.
Not acceptable!



Smaller than a 5p piece.
Acceptable!

Mobile phone policy:

Phones must be switched off during lessons and assemblies etc. Incorrect use may result in phones being confiscated until the end of the day. Anyone found with inappropriate content on their phone may have their device confiscated and the police may be informed.

We will also pursue any inappropriate use of social media such as Facebook, Twitter and Snapchat etc through the appropriate channels. This may include the police.



Shoes

Black low heel. All black footwear no coloured logos. If they are all black, then they are a shoe.



Socks & Tights

Socks should be black, grey or white and above the ankle. Girls tights in black or grey.



The school uniform for Prestatyn High School is on sale in the following local suppliers:

Jean Emporium, 3 Sussex Street Rhyl and 1st Class Clothes, 12 High Street, Prestatyn.

Other items of school uniform (shirts and trousers etc) can be sourced elsewhere.

These details are provided for information as the school does not comment on price, quality etc.

* Pupils entering Year 7 may be eligible for a Pupil Deprivation Grant. Information of how to apply for this grant will be available on the Denbighshire County Council website this summer. www.denbighshire.gov.uk
Education Department of Denbighshire County Council, Wynnstay Road, Ruthin, Denbighshire, LL15 1YN.

Gwarchodaeth, Iechyd a Diogelwch Ysgol

School Security, Health & Safety

The health and safety of everyone who attends and works at Prestatyn High School is paramount. The Health and Safety Committee of the Governing Body meets half termly to consider any issues that have arisen, receive reports and plan for improvements. A representative from Denbighshire County Council attends these meetings. School Council representatives have on occasions also been present to put forward ideas.

In order to improve school security further, a system of automatic security doors has been introduced so that the premises are locked during lessons. Anyone can vacate the building but security fobs are required to gain access from outside, apart from at lesson changes and at designated breaks, when the doors are released automatically.

The building will remain locked in the mornings until 8.00 a.m. when any early arrivals can gain access, but only by the door near the Library. Such pupils must remain in the Library or Snack Centre which will be supervised until 8.30 am when they will be allowed to enter the rest of the school. Parents and carers are asked to ensure no pupil arrives before 8.00 a.m. as they will not be able to gain access to the building. At the end of the day, the school will again be secure with all visitors directed to the main reception.

The main reception is the point of access for visitors at any time. All other access doors remain locked and closely monitored to ensure the safety of the school site. On the rare occasions when outside intruders enter the site, records are kept and reported to the police as required. Warning signs refer to the implications of inappropriate conduct by visitors.

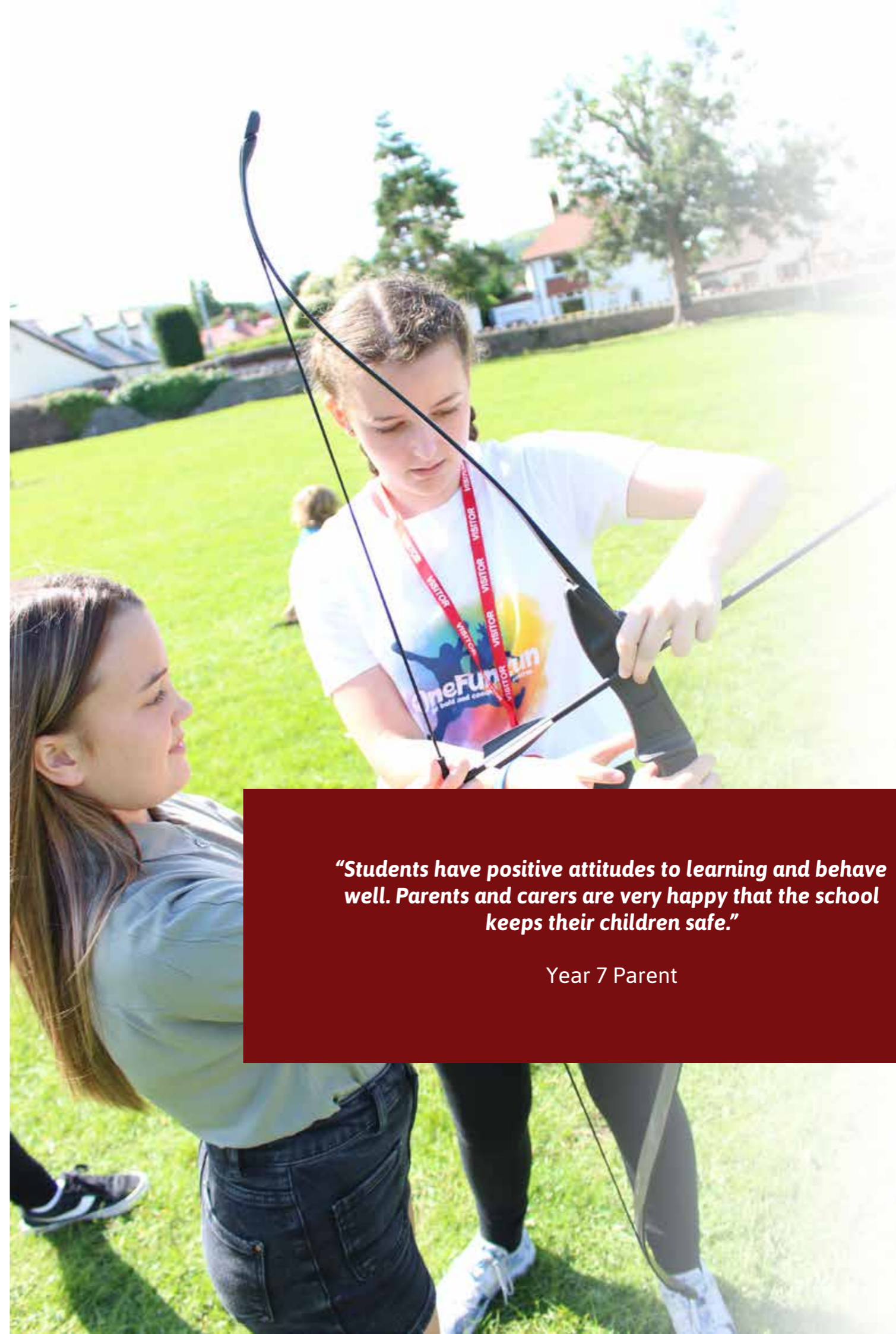
The Healthy Schools' Programme is monitored by a teaching postholder who co-ordinates curricular coverage of health related themes as well as regular extra-curricular activities. The school nurse visits regularly and the school is covered by our team of staff trained to support us in first aid. Please note our team are only there for emergency first aid, so please do not send your child to school if they are extremely unwell or likely to need medical attention during the day.

Summer Enrichment Programme

Prestatyn High School's Summer Enrichment Programme was a huge success. The 12 day scheme was attended by, on average 65 Year 6 children each day, who will be transitioning to the high school in September. James Williams and Sian Pierce, Prestatyn High School's liaison officers, along with Kate Roberts Head of Year 7 and Transition Coordinator organised an effective and well run scheme, which has been commended by Headteacher Mr Neil Foley and Welsh Government representatives.

The programme involved breakfast, lunch and a variety of activities each day. These included Graffiti Art, Zorbing, Olympics Tournament and Cook and Eat sessions to name just a few. Visiting speakers also led sessions. Once a week family members were also invited in to join their children for lunch.

Feedback from both the parents and children was overwhelmingly positive. Parents commented on how their child had thoroughly enjoyed each day, even asking if it was on at the weekends. Others said how it was helpful in providing a safe place that was free of charge for their child. The children felt they were now prepared to start high school and had made new friends as well as learning new skills.



"Students have positive attitudes to learning and behave well. Parents and carers are very happy that the school keeps their children safe."

Year 7 Parent

Prospectws yr Ysgol School Prospectus 2021 -22

Ysgol Uwchradd Prestatyn High School

2 Princes Avenue, Prestatyn Denbighshire LL19 8RS

Telephone: 01745 852312

Fax: 01745 855204

www.prestatynhighschool.co.uk

Email: prestatyn.high@denbighshire.gov.uk

Headteacher: Mr N Foley B.Sc MA.

Chair of Governors: Mrs L Davenport

NOR: 1599

A.A.Li/LEA

Geraint Davies

Pennaeth Addysg Dros Dro / Interim
Head of Education

Swyddfeydd y Cyngor / County Hall
Ffordd Wynnstay / Wynnstay Road
Rhuthun / Ruthin
Sir Ddinbych / Denbighshire
LL15 1YN